

## Platte River Associates, Inc.

Platte River Associates, Inc. (PRA) has been an industry leader since 1985 for providing petroleum systems modeling solutions to support the evaluation of hydrocarbon potential. Keys to PRA's longevity have been technological innovation and premium services for our clients. By leveraging our best-in-class software and domain expertise, our professional consulting team is extremely qualified to provide solutions and services that enhance understanding of a play or prospect and reduce exploration risk.

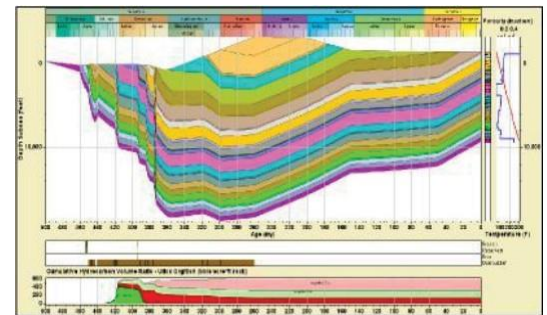
### **PRA Consulting Expertise:**

- Petroleum Systems Analysis and Basin Modelling
- Play Fairway Analysis
- Conventional and Unconventional Play Analysis
- Experience with small independents to large multi-nationals

### **Consulting Services to Increase Your Exploration Success:**

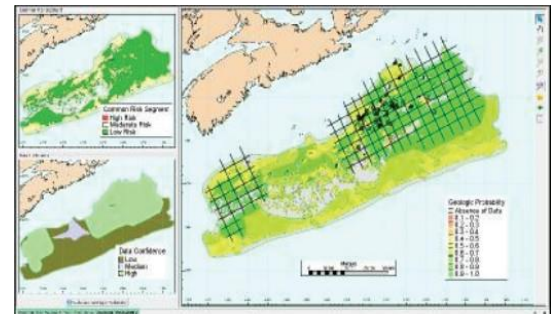
**Petroleum Systems Modelling and Analysis** - Model volumes of hydrocarbon generation, expulsion and migration through time using full-physics calculations in both conventional and unconventional plays in all types of geologic settings.

- Integration and analysis of relevant geological, geochemical and petrophysical information to build realistic full-physics petroleum systems models
- Probabilistic assessment of hydrocarbon volumes using Monte Carlo techniques
- 2-D models from wells, seismic, or cross sections for migration of HC from source to trap.



**Play Fairway Analysis** - Consistent and efficient spatial evaluation of geologic uncertainty in all types of plays, unconventional or conventional, in order to high-grade "sweet spots" for identifying drilling targets and areas for acreage acquisition. All elements of the petroleum systems can be taken into account in addition to other relevant factors driving your uncertainty.

- Tools facilitating the evaluation and ranking of prospects and plays
- Common Risk Segment maps of petroleum systems elements to analyze risk
- Maps of overall Play Geologic Probability (Pg) or Chance of Success (COS) and Yet-To-Find



*PRA consultants engage with your organization at levels you define. We collaborate with you to determine deliverables that assure success. Each engagement is customized to your specific company needs.*

For more information, contact:

Platte River Associates, Inc.  
500 Discovery Parkway  
Suite 175  
Superior, CO 80027 USA  
+1 303.448.0480  
info@platte.com  
www.platte.com

## Africa/Mediterranean

Nile Delta  
Western Desert of Egypt  
Ghana  
Equatorial Guinea  
Algeria  
Angola  
Tunisia  
Offshore Morocco  
Turkey (Trace Basin)  
Republic of South Africa (Orange Basin)  
Niger Delta  
Namibia  
Congo Fan  
Upper Egypt

## Asia-Pacific Rim

Gulf of Taiwan  
South China Sea  
Offshore Vietnam  
Onshore China  
Caspian Sea  
Australia (Gippsland and McArthur Basins)  
New Zealand (Canterbury Basin)  
Pakistan (On- offshore)  
Bangladesh

## Europe

West of Shetlands  
Norway (Barents Sea)  
Germany/France (Rhine Graben)  
Germany (On-offshore)  
Ukraine (Dnepr-Donets)  
Ireland (Clare Basin)  
Poland (Mid-Polish Trough)

## North America

MacKenzie Delta  
Scotian Shelf  
Chukchi Sea  
N. Alaska – NPRA, Beaufort Sea  
South Alaska  
Green River Basin  
Wind River Basin  
Powder River Basin  
Williston Basin  
Big Horn Basin  
Paradox Basin  
South Texas  
West Texas  
Florida  
Gulf of Mexico  
W. Interior Cretaceous Seaway  
Uinta Basin  
SW Kansas  
Maverick Basin  
New York Marcellus  
Pennsylvania Marcellus  
Alberta Basin

## Central and South America

Neuquen Basin  
Offshore Argentina  
Offshore Basins of Brazil  
Bolivia  
Maracaibo Basin  
Burgos Basin  
Basins of the Bay of Campeche  
Sureste Basin  
Tampico-Misantla Basin  
Chicontepec Basin  
Veracruz Basin  
Saline-Comalcalco Basin  
Campeche-Sigsbee Basin  
Macuspana Basin  
Villahermosa Basin  
Tierra Del Fuego  
Sabinas Basin  
Llanos Basin  
Cordillera  
Maranon Basin

For more information, contact:

Platte River Associates, Inc.  
500 Discovery Parkway  
Suite 175  
Superior, CO 80027 USA  
+1 303.448.0480  
info@platte.com  
www.platte.com